

STRATEGY DEVELOPMENT

Over 45 years of experience in reinsurance business, Thai Re continues to expand its presence in the region and provide innovative reinsurance solutions with integrity and professionalism

1991



Played more active role by co-developing insurance products with clients.

1978



Only focused on providing reinsurance capacity.

1993



Listed on the Stock Exchange of Thailand.

2008



Started to develop innovative insurance products as well as unconventional services and channels to reach untapped market, which is the so-called non-conventional business

2018



Successfully expanded business in Vietnam, Laos, and Cambodia.



2012



Raised equity capital and established a strategic partnership with Fairfax Financial Holdings since then.

2019- Present



- Assigned International Insurer Financial Strength (IFS) ratings of A- (Strong) with stable outlook from Fitch Ratings.
- Successfully listed its subsidiary, BlueVenture Group (BVG), in the MAI on February 17, 2023.



Thai Reinsurance Public Company Limited

Address: No.100/3-4, Sathorn Nakorn Tower 3rd – 4th Floor, North Sathorn Road, Silom, Bang Rak, Bangkok 10500

Tel: +662 660-6111, +662 666-8088

Fax: +662 660-6100, +662 660-8080

E-mail: mailbox@thaire.co.th

Website: www.thaire.co.th

Contact IR

Investor Relations Contact
Tel : +66-2-660-611 ext.2510
E-mail : IR@thaire.co.th
www.investor.thaire.co.th

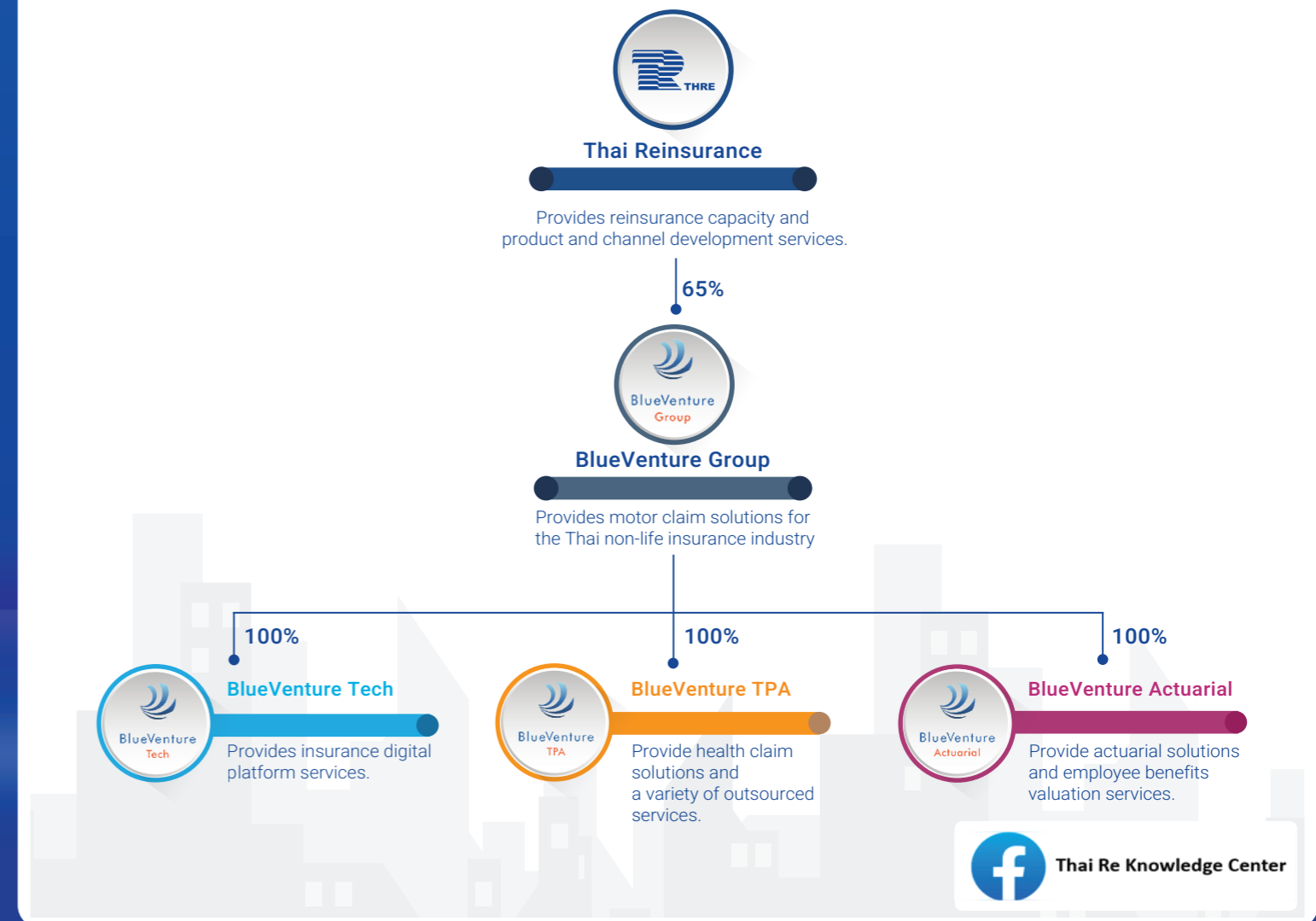


Thai Re aims to be the most valuable personal line insurance partner in Thailand and Southeast Asia

Highlights of Co-developed Product in Thailand and ASEAN

A strong expertise in developing personal line products that are tailored to consumer requirements and supported by professional marketing services.

<h4>PERSONAL ACCIDENT</h4> <ul style="list-style-type: none"> PA for Ladies PA for Kids PA for Loan Customers 	<h4>HEALTH</h4> <ul style="list-style-type: none"> Loan Protection Insurance Group Health XOL Insurance Health Insurance for Middle-Income Segment Specific Diseases Health Insurance Critical Illness and Cancer Insurance 	<h4>MOTORS</h4> <ul style="list-style-type: none"> Motor Insurance (Motor High-Sum Insured, Motor Usage Based : Smart Motor-Pay per Mile) Motor-Related Products (Motor Add-on, Motor Gap, Motor EW) 	<h4>OTHERS</h4> <ul style="list-style-type: none"> Gadget Insurance / Electronic Equipment Insurance EW for Gadget/Electronic Equipment Personal Cyber Insurance SME Cyber Insurance EV Charger Insurance Solar Rooftop Insurance
--	--	--	---





Our Core Value



T

Technology



H

Harmony



A

Active



I

Innovation



R

Reinsurance Expertise



E

Expression



MARKET DATA

QUOTE **THRE**

MARKET CAP **3,320** THB(M)
(As at 28 Dec 2023)

PAID-UP CAPITAL **3,709** THB(M)

FREE FLOAT **51.76%**
(As at 14 Mar 2023)

(As at 28 Dec 2023)



KEY FINANCIALS 2023

GROSS WRITTEN PREMIUM **4,903** Million THB +17%
NET WRITTEN PREMIUM **4,654** Million THB +21%
NET EARNED PREMIUM **4,350** Million THB +12%

INVESTMENT INCOME **64** Million THB +45%
SERVICE INCOME **500** Million THB +18%
NET PROFIT **231** Million THB +219%

TOTAL ASSET **7,813** Million THB +17%
NET SERVICE INCOME **66** Million THB +25%

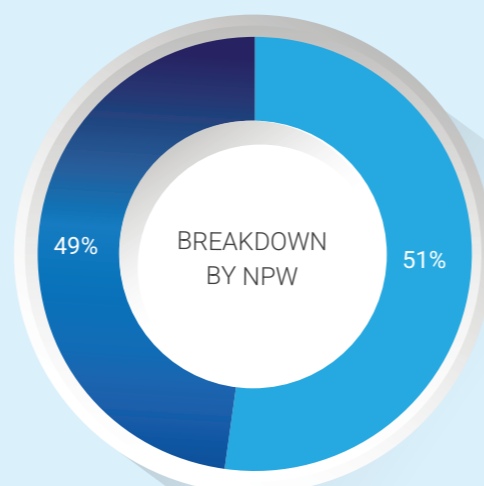


NUMBER OF EMPLOYEES

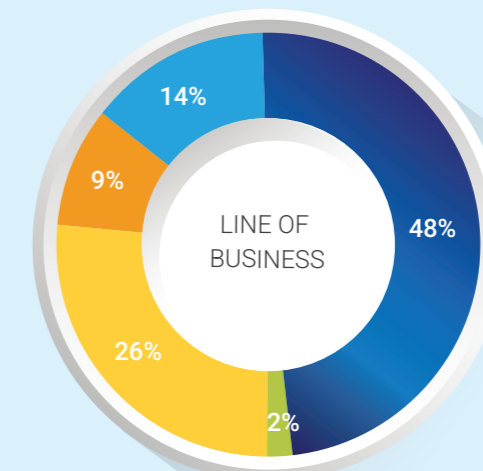
THRE **122** BVG **344**



LINE OF BUSINESS



- Conventional
- Non-Conventional

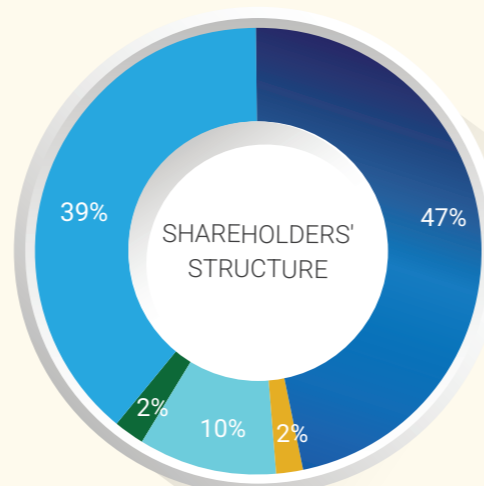


- Property
- A&H
- Marine
- Motor
- Other



SHAREHOLDING STRUCTURE

(As of 13 March 2024)



- HWIC Asia Fund
- Thai NDVR
- Thai Insurance Companies
- Fund/ Financial Institution
- Others



CAPITAL ADEQUACY RATIO (%)

