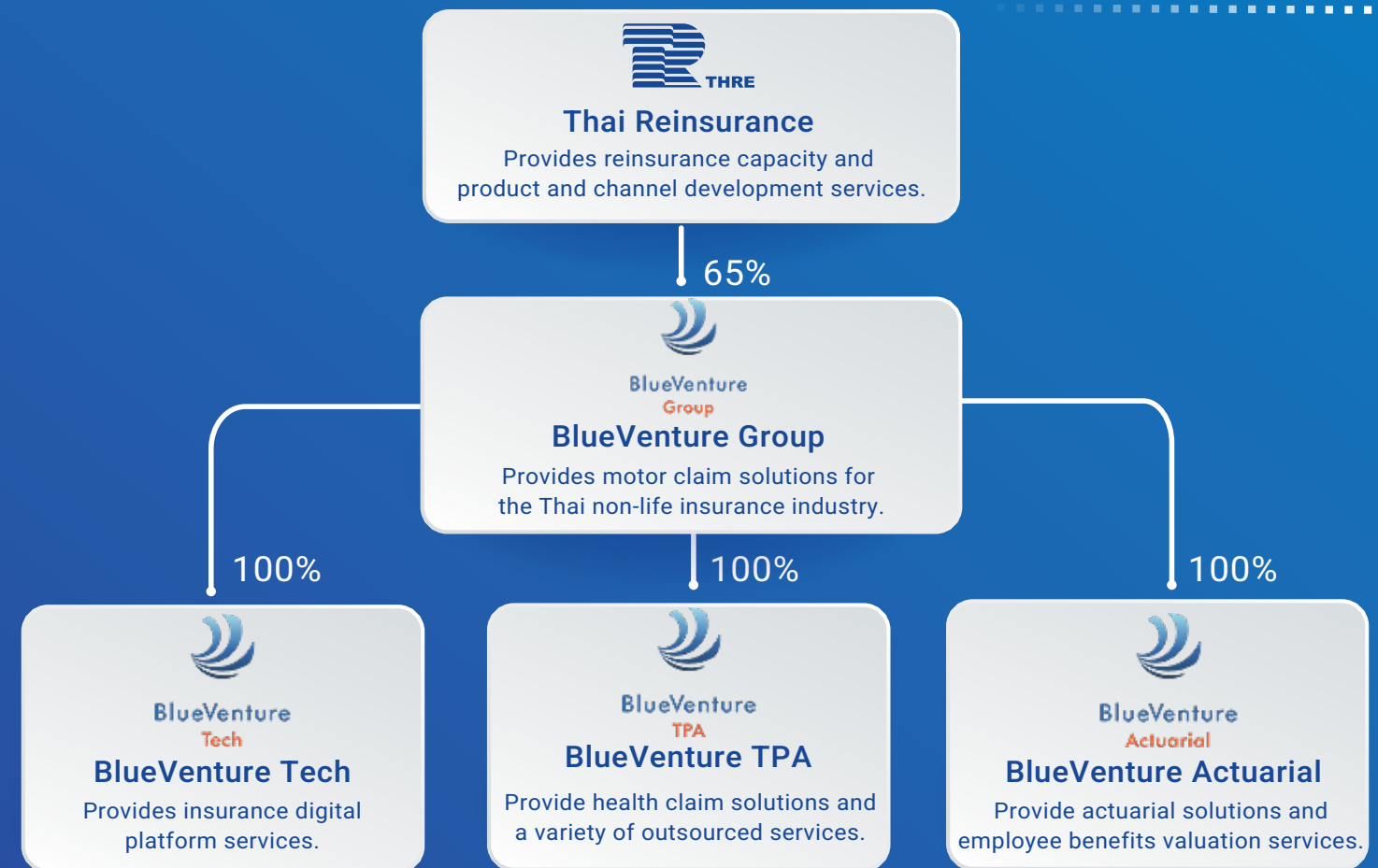
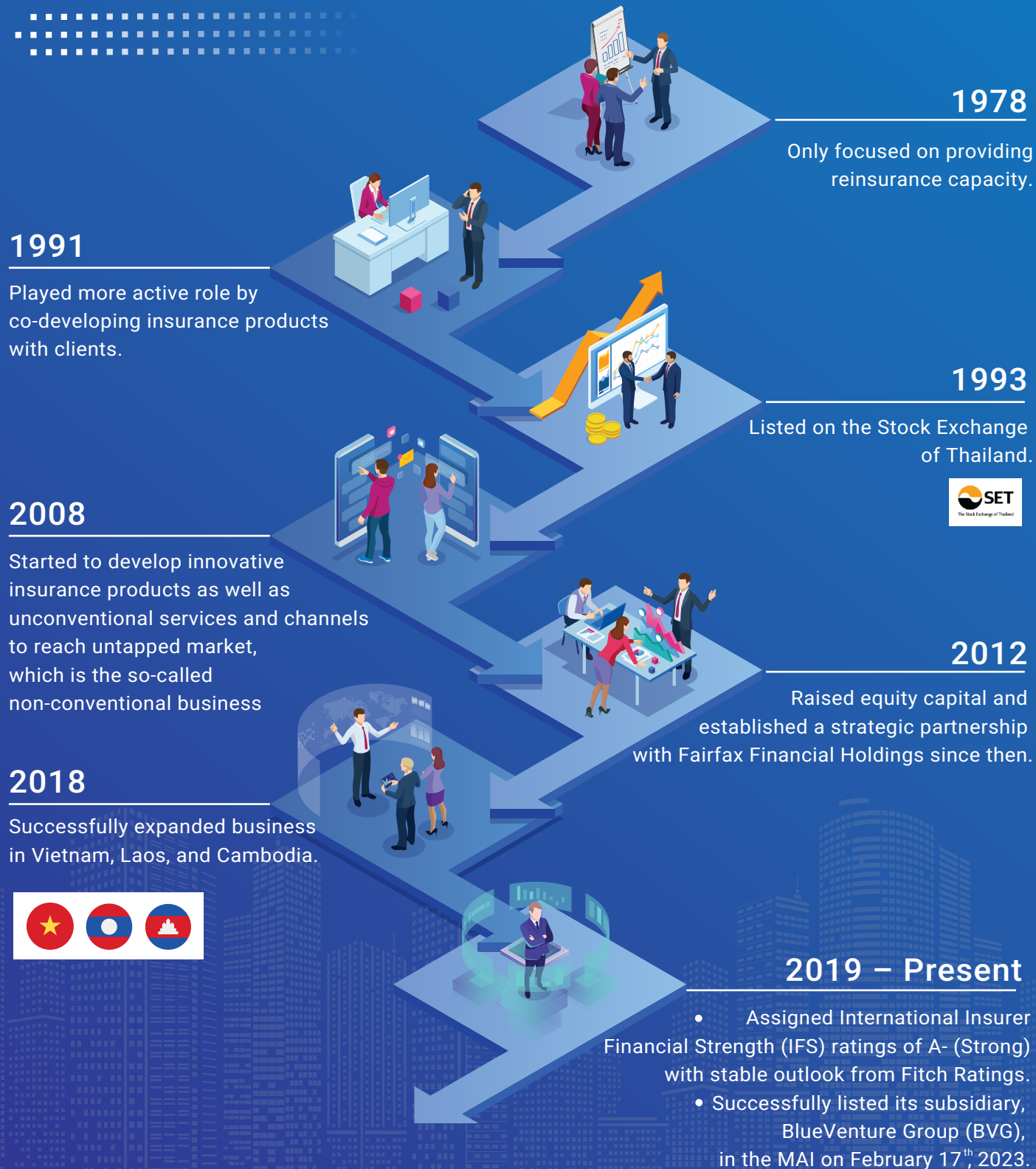


## STRATEGY DEVELOPMENT

Over 45 years of experience in reinsurance business, Thai Re continues to expand its presence in the region and provide innovative reinsurance solutions with integrity and professionalism

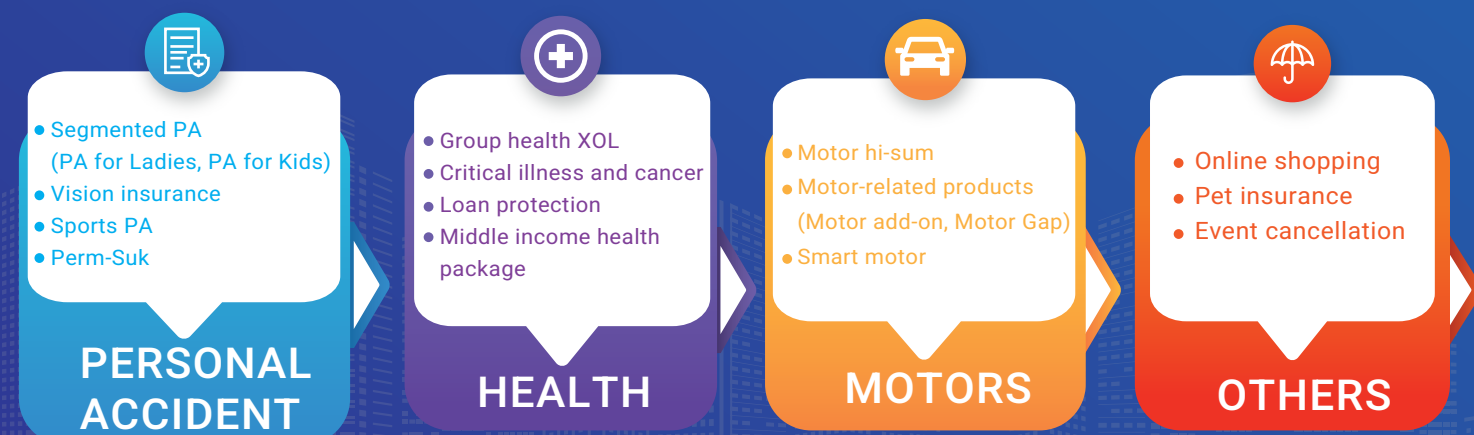


## We sell innovation and services through reinsurance capacity and expertise

Thai Re aims to be the most valuable personal line insurance partner in Thailand and Southeast Asia.

## Highlights of Co-developed Products in Thailand and ASEAN

A strong expertise in developing personal line products that are tailored to consumer requirements and supported by professional marketing services.



## 2023 OUTLOOK



No more Covid-19 impact going forward, all coverage expiry in Q2/2022.



Favorable reinsurance market conditions as a result of prolonged hard market.



Increase in health insurance awareness after Covid-19.



Significant growth in ASEAN market



Substantial service business growth driven by AI projects.

## 2022 KEY FINANCIALS

GROSS WRITTEN PREMIUM	NET WRITTEN PREMIUM	NET EARNED PREMIUM
<b>4,200</b> Million THB	<b>3,856</b> Million THB	<b>3,889</b> Million THB

INVESTMENT INCOME	SERVICE INCOME
<b>50</b> Million THB	System-wide <b>425</b> Million THB

TOTAL ASSET	NET SERVICE INCOME
<b>6,700</b> Million THB	<b>53</b> Million THB

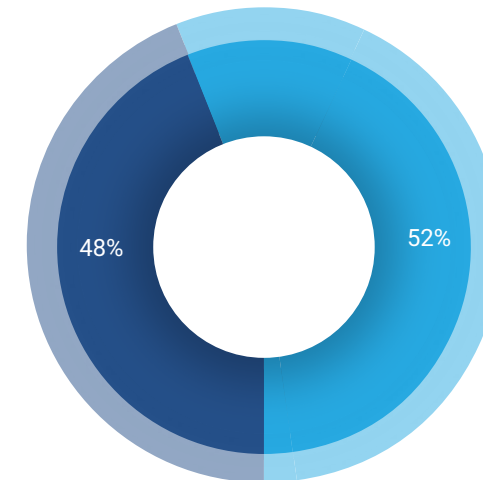


## NUMBER OF EMPLOYEES

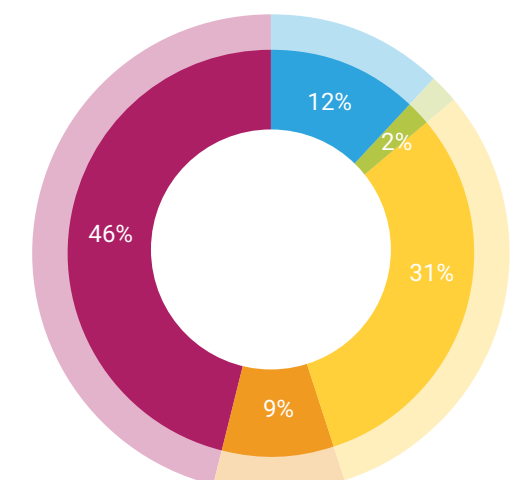
THRE	<b>121</b>
BVG	<b>306</b>



## LINE OF BUSINESS



● Conventional ● Non-Conventional



● Property ● Other  
● Marine ● A&H  
● Motor

## MARKET DATA

QUOTE  
THRE

MARKET CAP

**4,172.84** Million THB  
(As at 30 Dec 2022)

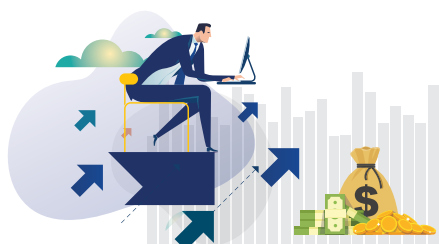
PAID-UP CAPITAL

**3,709,194,572.16** Million THB

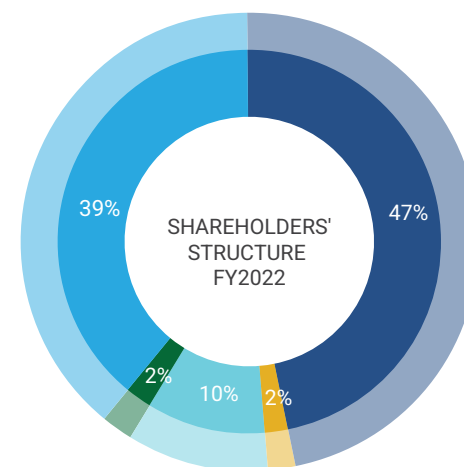
FREE FLOAT

**50.69%**

(As at 09 Mar 2022)



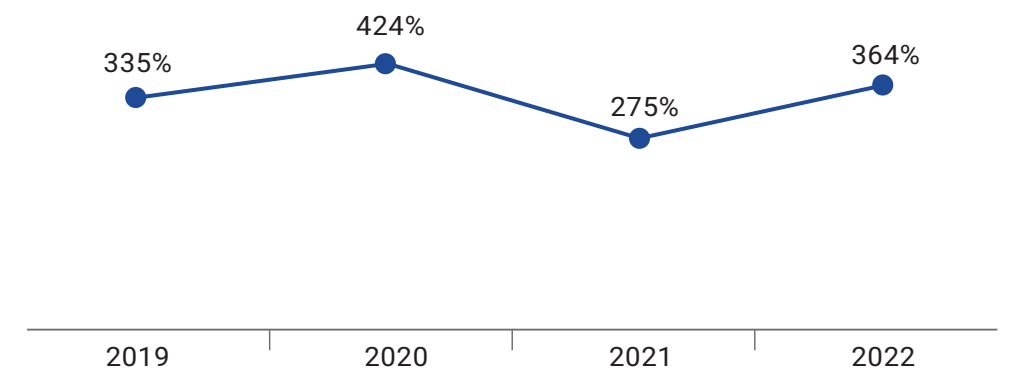
## SHAREHOLDER STRUCTURE



● HWIC Asia Fund  
● Thai NDVR  
● Thai Insurance Companies  
● Funds/Financial Institutions  
● Others

(As of 25 Nov 2022)

## CAPITAL ADEQUACY RATIO (%)



## Thai Reinsurance Public Company Limited

48/22-24 Soi Ratchadapisek 20, Ratchadapisek Road  
Samsenok, Huaykwang, Bangkok, 10310, Thailand.  
Telephone: +662 660-6111, +662 666-8088  
Facimile: +662 660-6100, +662 660-8080  
E-mail: mailbox@thaire.co.th  
Website: www.thaire.co.th

## Contact IR

Investor Relations Contact  
Tel : +66-2-660-611 ext.2510  
E-mail : IR@thaire.co.th  
www.investor.thaire.co.th